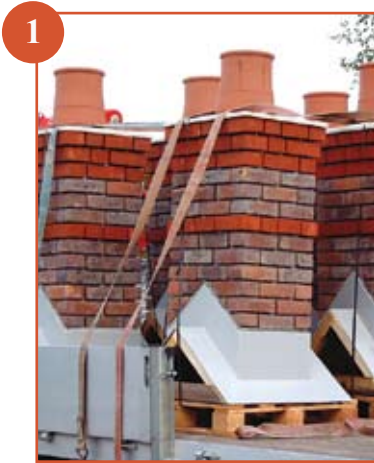


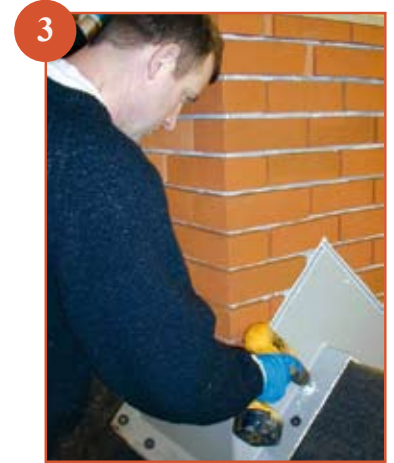
Typical Chimney Installation Guide - based on a Mid Ridge Chimney



1 Delivered to site ready for pointing (on the ground)



2 Crane into position on the trusses using the lifting eyes and loops supplied



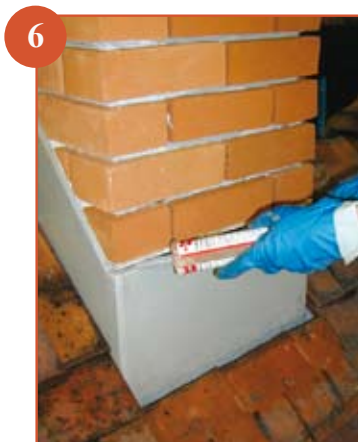
3 Drill through support plates and screw to the trusses using the fixings provided



4 Batten over the support plate as shown



5 Tile the roof in the usual manner



6 Apply the supplied sealant to the channel before and after flashing



7 The lead is then dressed securely into the flashing channel



8 The lifting eye plugs must be sealed into the lifting eyes to finish